



# ST. MARY'S COLLEGE

*Together we will shape your future.*



# Sixth Form Options

*2022/2023*

# Contents

Principal's Welcome.....	1
Meet the Team.....	2
Post 16 curriculum: Subject Choices.....	3
Foyle Learning Community.....	4
Art & Design.....	5-6
Children's Care, Learning and Development.....	7-8
English Literature.....	9-10
Geography.....	11-12
Health and Social Care.....	13-14
History.....	15-16
Hospitality.....	17-18
Information Technology.....	19-20
Life and Health Sciences.....	21-22
Mathematics.....	23-24
Moving Image Art.....	25-26
PE.....	27
Performing Arts.....	28-29
Physics.....	30
Professional Business Services.....	31-32
Religious Studies.....	33-34
Science.....	35-36
Technology & Design .....	37-38
New Horizons Programme.....	39-41
Enrichment Programme.....	42
Outside the Classroom.....	43
Class of 2021 Destinations.....	44
Careers.....	45-52
Occasions in Sixth Form.....	53

# Welcome



## Principal's Welcome

Dear Parent(s)/ Guardian(s)

I hope you will find this booklet useful in making the all-important decisions that your child faces in the coming weeks.

As you will be aware, recent developments in education have seen the broadening of the curriculum in order to facilitate more applied, practical subjects in the school timetable. This recognises that students have different ways of learning, different skills that highlight abilities which can sometimes be missed by the more 'paper-based' curriculum.

We are embracing the move in trying to offer more alternatives to our students. This includes a number of applied / vocational options. We hope the extra information we have given on these courses will help you understand more about them. If you have any direct questions, please do not hesitate to contact us.

This booklet will help inform you of the subject areas that are appropriate for your child and assist with future planning, *however, please bear in mind that places are limited on many of the courses and interviews may be required. Please also note that, in some cases, courses may not run if there are insufficient numbers.*

I hope you know you have the full support of the school in helping you both make decisions at this important time.

Yours sincerely,

*Brian McGinn*



# Meet the Team



**Senior Teacher KS4/5**  
**Miss Yvonne Connolly**



**Head of Sixth Form**  
**Mrs Rona O'Donnell**



**SENCO Mr Eugene Moore**



**Designated Teacher Ms Karen Holt**



**Sixth Form Supervisor**  
**Ms Laura Smallwoods**

Our mission statement “A community of learners growing in faith, learning for life and aiming for excellence” captures the essence of St Mary’s College. Our fundamental aim is the education of the whole person, blending learning with faith, and faith with daily life. We aspire to create an open, happy, stimulating and mutually respectful community environment in which young people are able to develop to the full range of their abilities and talents in a balanced, integrated, and generous way. Sixth Form is a critical period of transition and we take pastoral care very seriously. We have in place a pastoral system designed to support your daughter and indeed yourself through all of the challenges a school and indeed life presents.



# Post 16 Curriculum: Subject Choices

The following courses are available on campus at St Mary's College:

Subject	Qualification	Single or Double Award
Art and Design	G	S.A
Children's Play, Learning and Development	B	S.A
English Literature	G	S.A
Geography	G	S.A
Health & Social Care	A	D.A
Health & Social Care	A	S.A
History	G	S.A
Hospitality	B	S.A
Information Technology	L3	S.A
Science	B	D.A
Life and Health Sciences	A	D.A
Mathematics	G	S.A.
Moving Image Arts	G	S.A
PE	G	S.A
Performing Arts - Music	G	S.A
Physics	G	S.A
Professional Business Services	G	S.A
Religious Studies	G	S.A
Technology & Design	G	S.A

## Key

G = General Certificate of Education

A = Applied GCE Single Award and Double Award

B = BTEC National Certificate

L3 = Level 3

# Foyle Learning Community

We offer a wide range of courses to Sixth Form pupils at St Mary's College, not only do our pupils study on campus, they also have the opportunity to study in other schools throughout the city. This is through the Foyle Learning Community.



## List of participating schools available in the Foyle Learning Community:

Foyle College	St Columb's College	Thornhill College
Lumen Christi College	St Cecilia's College	St Brigid's College
Oakgrove Integrated College	St Joseph's High School	

## \*Courses available through the Foyle Learning Community Schools:

Biology	Drama	Irish	Physics
Chemistry	Engineering	Journalism	Politics
Dance	French	Software Systems Development	
Spanish			

\* Subject to availability and FLC entry requirements



# Art & Design

## A-Level (CCEA)

### Preferred Entry Requirements:

Grade B or above in GCSE Art and Design.

Grade C or above in English Language.

### Why study Art and Design?

The creative and cultural industries are a fast growing area of the economy and are key to economic success. Northern Ireland and the UK have established reputation in these industries. This qualification provides students with opportunities to develop key skills needed for the world of work and further and higher education.

It creates a pathway to a future career in a creative field. Possible careers include advertising, architecture, art curation, craft, jewellery, fashion design, car design, film, costume design, special effects, make-up, photography, graphic design, set design, furniture design, interior design, music, animation, performing arts, publishing, software design, toys and games design, TV, radio and video games design. A wide range of STEM careers such as engineering now also require creative, artistic and design skills.

The study of GCE Art and Design nurtures a range of qualities which are highly sought after by employers. These include creativity, problem-solving, resourcefulness, resilience, imagination, empathy and innovation. Higher order thinking skills such as researching, analysing and reflecting are embedded throughout this qualification.

### How will I be assessed in this subject?

How will I be assessed?		
Unit	Assessment Description	Weighting
AS 1	Teacher assessment of work with external moderation Assessment Objectives 1, 2, 3 only	50% of AS 20% of A level
AS 2	Teacher assessment of controlled task with external moderation Assessment Objective 4 more heavily weighted than 1, 2, 3	50% of AS 20% of A level
A2 1	Written investigation (1000–3000 words) externally assessed  Teacher assessment of practical element with external moderation Assessment Objectives 1, 2, 3 only	20% of A2 12% of A level  40% of A2 24% of A level
A2 2	Teacher assessment with external moderation Assessment Objective 4 more heavily weighted than 1, 2, 3	40% of A2 24% of A level



# Art & Design A-Level (CCEA)

## Which units will I study?

What will I study?	
Unit	Areas of Study
<b>AS 1:</b> Experimental Portfolio	Theme based: students will have the opportunity to develop, explore and record ideas.
<b>AS 2:</b> Personal Outcome	Theme based: students will have the opportunity to produce a final outcome/outcomes.
<b>A2 1:</b> Personal and Critical Investigation	Theme based: students have the opportunity to produce both a written (1000–3000-word) investigation and a practical response.
<b>A2 2:</b> Thematic Outcome	Theme based: students will have an opportunity to produce a final outcome/outcomes.

## What skills will I develop

This qualification provides students with opportunities to develop key skills needed for the world of work and further and higher education. It creates a pathway to a future career in a creative field. The study of GCE Art and Design nurtures a range of qualities which are highly sought after by employers. These include creativity, problem-solving, resourcefulness, resilience, imagination, empathy and innovation. Higher order thinking skills such as researching, analysing and reflecting are embedded throughout this qualification.

## What careers pathways are available to me if I study this subject?

We have developed strong links with the School of Art Design and Architecture in Ulster University. They have provided our pupils with tailored and personalised tours around the entire Belfast campus. More locally, we have developed links with Letterkenny Institute of Technology and Design. A representative visits the school to discuss all the 3rd level pathways available to pupils who wish to study closer to home.

The number of our pupils who apply and who are successfully accepted onto 3rd level courses is exceptionally high.

Careers in the Creative Industries include:

Accessory Design	Advertising Design	Animation	Architecture
Fashion Design	Games Design	Graphic Design & Illustration	
Interaction Design	Painting	Photography	Product Design
Sculpture	Textile & Fashion Design		



# Children's Play, Learning and Development

## BTEC (EDEXCEL)

### Preferred Entry Requirements:

5 GCSE's

Preferable – Grade C or above in English Language.

### Why study BTEC Children's Play, Learning and Development?

- Are you interested in opportunities to develop, practise and demonstrate your skills required for professional childcare and early years work?
- Are you interested in working with children from birth to 8 years in a variety of settings?
- Are you interested in a professional career in working with children?

Children's Learning is the subject is for you and for anyone for anyone with an interest in pursuing career in teaching, social work, crèche/childcare worker and many more.

### How will I be assessed in this subject?

#### Work Placement

Learners are also required to undertake a total of 50 hours supervised work placement in a variety of educational settings, working with children from birth to 8 years. Professional practice is an essential component of the course.

#### Assessment

There are three mandatory units, two external and one internal. Learners must complete and achieve at Near Pass grade or above in all mandatory external units and achieve a Pass or above in all mandatory internal units.

# Children's Play, Learning and Development

## BTEC (EDEXCEL)

### Which units will I study?

Pearson BTEC Level 3 National Extended Certificate in Children's Play, Learning and Development				
Unit number	Unit title	GLH	Type	How assessed
<b>Mandatory units – learners complete and achieve all units</b>				
<b>1</b>	Children's Development	<b>120</b>	<b>Mandatory</b>	External
<b>2</b>	Development of Children's Communication, Literacy and Numeracy Skills	<b>120</b>	<b>Mandatory</b>	External
<b>3</b>	Play and Learning	<b>60</b>	<b>Mandatory and Synoptic</b>	Internal
<b>Optional units – learners complete 1 unit</b>				
<b>5</b>	Keeping Children Safe	<b>60</b>	<b>Optional</b>	Internal
<b>6</b>	Children's Physical Development, Care and Health Needs	<b>60</b>	<b>Optional</b>	Internal
<b>8</b>	Working with Parents and Others in Early Years	<b>60</b>	<b>Optional</b>	Internal
<b>11</b>	The Early Years Foundation Stage	<b>60</b>	<b>Optional</b>	Internal

### What skills will I develop?

By studying Children's Play Learning and Development you will get the opportunity to develop and practice a wide range of skills and techniques, personal skills and attributes essential for working life and for a professional career working with children. You will increase your employability and interpersonal skills through the various work placements you will complete as well as developing confidence, communication, organisational, leadership, problem solving and ICT skills.

### What careers pathways are available to me if I study this subject?

Note this pathway leads directly to employment or to FE studies.



# English Literature A-Level (CCEA)

## Preferred Entry Requirements:

A minimum of a Grade B in both GCSE English Language and English Literature.

## Why study English Literature?

If you enjoy reading and discussing ideas, and have an interest in not only reading literature but also critically analysing literature, then this is the course for you. Here are 3 good reasons why you should study GCE English Literature:

1. Wide range of interesting texts which include modern, female, local authors and poets;
2. Opportunity to study the Shakespearean genre: tragedy, comedy, problem or last plays;
3. Coursework involves an in-depth comparative study of two novels.

## How will I be assessed in this subject?

This specification is made up of two parts: AS and A2. The AS units make up 40% of the full A level qualification, and the A2 units make up 60%.

80% of the final GCE qualification will be assessed through external examination. 20% of the final GCE qualification will be assessed through internally-assessed and externally-moderated coursework.

# English Literature

## A-Level (CCEA)

### Which units will I study?

In GCE English Literature (CCEA), you will study 2 units at AS and 3 further units at A2. The table below summarises the content and structure of the AS and A2 courses:

Content	Assessment	Weightings
<b>AS 1: The Study of Poetry 1900 – Present and The Study of Drama 1900-Present</b>	External written examination 2 hours Students answer two questions, one from Section A and one from Section B. Section A is open book. Section B is closed book.	60% of AS  24% of A level
<b>AS 2: The Study of Prose Pre 1900</b>	External written examination 1 hour Students answer one question. Closed book	40% of AS  16% of A level
<b>A2 1: Shakespearean Genres</b>	External written examination 1 hour 30 minutes Students answer one question. Closed book	20% of A level
<b>A2 2: The Study of Poetry Pre 1900 and Unseen Poetry</b>	External written examination 2 hours Students answer 2 questions, one from Section A and the question set in Section B Closed book	20% of A level
<b>A2 3: Internal Assessment</b>	Internal assessment Students complete a 2500-word essay.	20% of A level

### What skills will I develop

The skills you acquire through taking this course are in high demand from employers as well as universities and colleges

### What careers pathways are available to me if I study this subject?

English Literature is one of the main subjects in the Arts and Humanities family and complements subjects such as Languages, History, Politics and Religious Studies. A qualification in GCE English Literature could lead to a range of degree courses in Arts, Humanities, Law, Media and Communication. Armed with GCE English Literature, you could even go straight into employment. If you are interested in a career in teaching (Primary/Secondary English teacher), journalism, marketing, film and media or law then a qualification in GCE English Literature is a good basis for further training in these areas.



# Geography

## A-Level (CCEA)

### Preferred Entry Requirements:

Study of GCSE Geography is desirable but not essential.

Grade B at GCSE Geography Higher Tier **or** Grade C in Double Award Science.

Grade C or above in English Language and Mathematics.

### Why study Geography?

Geography graduates are extremely employable at the present! Combining geography with other A'Level subjects could lead you to jobs such as working in the leisure industry, joining the police or armed services, selling and marketing or working in civil aviation.

### How will I be assessed in this subject?

AS Geography – Year 13	A2 Geography – Year 14
<b>AS1 --- Physical geography</b> <b>40% of AS (16% of A2)</b> <ul style="list-style-type: none"> <li>• 1hr 15 minutes written examination</li> <li>• Structured short and extended questions</li> </ul> <b>Physical topics</b> <ul style="list-style-type: none"> <li>• Rivers</li> <li>• Ecosystems</li> <li>• Weather</li> </ul>	<b>A21 -- Human Geography 24% of A2</b> <ul style="list-style-type: none"> <li>• 1hr 30 minutes written examination</li> <li>• Structured short and extended questions.</li> </ul> <b>Human Topics</b> <ul style="list-style-type: none"> <li>• Population</li> <li>• Tourism</li> </ul>
<b>AS2 –Human Geography-</b> <b>40% of AS (16% of A2)</b> <ul style="list-style-type: none"> <li>• 1hr 15 minutes written examination</li> <li>• Structured short and extended questions</li> <li>• Population</li> <li>• Settlement</li> <li>• Development</li> </ul>	<b>A22 – Physical Geography and Decision Making 24% of A2</b> 1hrs 30 minutes written examination <ul style="list-style-type: none"> <li>• Structured short and extended questions</li> </ul> <b>Physical Topics</b> <ul style="list-style-type: none"> <li>• Earthquakes and Volcanoes</li> <li>• Ecosystems -- Tropical rainforests</li> </ul>
<b>AS3 Fieldwork Skills and Techniques in Geography – 20% of AS ( 8% of A'Level)</b>  1hr written examination on fieldwork data, skills and techniques All pupils will go on a day study to Benone beach.	<b>A23: Decision Making in Geography</b>  <b>(12% of A' level)</b> This is a compulsory decision making exercise in the form of a case study. The pupils will be given a case study e.g. to build an airport outside a city to read during the exam. They must make a decision e.g. to build an airport or not using the information they have been given and write this in the form of a detailed report.

# Geography

## A-Level (CCEA)

### Which units will I study?

You will study 3 Units in year 13 – AS1, AS2 and AS3 and you will also study 3 units in year 14 A21, A22 and A23.

### What skills will I develop?

Geography will help you develop your communication and teamwork skills, as you'll often work on group projects. You'll also develop your research and analysis skills including in IT, lab and fieldwork, which means you will be able to collect and look for patterns in data.

Employers love the mix of technical and social skills people get from studying geography, which they see as **very transferable**, i.e. useful for a whole range of jobs.

### What careers pathways are available to me if I study this subject?

A'Level GEOGRAPHY with .....	POTENTIAL CAREERS
Art / Technology/ Engineering	• advertising • architecture • cartography • landscape architecture • renewable energies, planning
Science	• agriculture • environmental health • estate management • nature conservation , meteorologists
Maths	• banks • building • societies • business • civil service • census taking, statistician, researcher
English	• law • publishing •
Modern Languages	• business • bilingual secretary • overseas marketing • leisure and tourism •
Maths and Science	• civil engineering • meteorology • mining • navigation • photography • marine biologists
Various Subjects	• leisure services • sport and recreation management • social and youth work • surveying • transport services • local authority administration • teaching •



# Health and Social Care A-Level Applied (CCEA)

## Preferred Entry Requirements:

5 GCSE's or equivalents. Including English Grade C. You must have excellent attendance. You must be focused and driven and really want to do well.

## Why study Health and Social Care?

Pupils who study Health and Social Care A Level enjoy the course and perform exceptionally well in both portfolios and written exam. 97% of our A Level pupils achieved A\*-C in 2019. Pupils must complete an extended period of work placement in a care setting of their choice, which provides valuable experience of the workplace and an insight into possible future careers. Added to this, the Health and Social Care A Level supports the current labour market, where there is an increasing need for practitioners in the fields of nursing and social work. For example, 94% of pupils studying Social Work in University of Ulster secure employment in this field within 6 months of qualifying. Additionally, 100% of pupils studying Nursing in University of Ulster secure employment in this field within 6 months of qualifying.

## How will I be assessed in this subject?

### Single Award

A Level Health and Social Care single award comprises of 6 compulsory units of work, 4 portfolios and 2 written exams.

Unit	Assessment	Weightings AS level	Weightings A2 level
AS 1: Promoting Quality Care	Internal portfolio	25% of AS	10% of A2
AS 2: Communication in Health, Social Care, and Early Years Settings	Internal portfolio	25% of AS	10% of A2
AS 3: Health and Well-being	External Exam	50% of AS	20% of A2
A2 3: Providing Services	External Exam		30% of A2
A2 4: Health Promotion	Internal portfolio		15% of A2
A2 5: Supporting the Family	Internal portfolio		15% of A2



# Health and Social Care A-Level Applied (CCEA)

## Double Award

A Level Health and Social Care double award comprises of 12 compulsory units of work, 8 portfolios and 4 written exams.

Unit	Assessment	Weightings AS level	Weightings A2 level
AS 1: Promoting Quality Care	Internal portfolio	12.5% of AS	5% of A2
AS 2: Communication in Health, Social Care and Early Years Settings	Internal portfolio	12.5% of AS	5% of A2
AS 3: Health and Well-being	External Exam	25% of AS	10% of A2
AS 4: Safeguarding Children	Internal portfolio	12.5% of AS	5% of A2
AS 5: Adult Service User	External Exam	25% of AS	10% of A2
AS6: Holistic Therapies	Internal portfolio	12.5% of AS	5% of A2
A2 1: Applied Research	Internal portfolio		7.5% of A2
A2 2: Body Systems and Physiology of Health and Illness	Internal portfolio		7.5% of A2
A2 3: Providing Services	External Exam		15% of A2
A2 4: Public Health and Health Promotion	Internal portfolio		7.5% of A2
A2 5: Supporting the Family	Internal portfolio		7.5% of A2
A2 6: Understanding Human Behaviour	External Exam		15% of A2

## What skills will I develop?

Pupils will develop a vast variety of skills through studying A Level Health and Social Care. Through portfolio work they will develop time management skills, working to deadlines, literacy skills, independence, ownership of their own work and problem-solving skills.

Through work placement they will develop and enhance communication skills, punctuality, attendance, initiative, working in teams, working with clients, empathy, a caring nature, patience, and confidentiality.

## What careers pathways are available to me if I study this subject?

Mental Health nurse, Adult nurse, Practice nurse, Paediatric nurse, Social Worker, Clinical Psychologist, Teacher, Educational Psychologist, Occupational Therapist, Sport Psychologist, Paramedic, Forensic Psychologist, Youth Worker, Creche Owner

# History

## A-Level (CCEA)

### Preferred Entry Requirements:

Study of GCSE History is desirable but not essential.

Grade B in GCSE History or Grade B in English Literature if GCSE History has not been studied.

### Why study History?

History is a strong academic subject which is highly regarded by universities and employers. Choosing to study history will provide you with opportunities to develop skills valuable to many future careers. The key benefit of studying history is that students develop as inquiring, curious and critical thinkers. You will learn about interesting and important events from the past which have and continue to shape the world we live in.

### How will I be assessed in this subject?

AS 1: Option 5: Nazi Germany 1918-1945	A'S 2 Option 3: Crisis and Conflict in Ireland 1823-1867
External written examination: 1 hour 30 50% of AS & 20% of A level	External written examination : 1 hour 30 50% of AS & 20% of A level
A2 1 Option 3: The Causes and Consequences of Great Power Conflict 1848–1945	A2 2 Option 5: The Partition of Ireland 1905-1925
External written examination : 1 hour 20% of A level	External written examination : 2 1/2 hours 40% of A level



# History

## A-Level (CCEA)

### Which units will I study?

<b>AS 1: Option 5: Nazi Germany 1918-1945</b> Weimar Republic, Rise of Hitler, Consolidation of Power, Economic policies, control of German Society External written examination: 1 hour 30 50% of AS & 20% of A level	<b>A'S 2 Option 3: Crisis and Conflict in Ireland 1823-1867</b> Daniel O'Connell, Young Irelanders, The Great Irish Famine, The Fenians and 1867 Rebellion External written examination: 1 hour 30 50% of AS & 20% of A level
<b>A2 1 Option 3: The Causes and Consequences of Great Power Conflict 1848-1945</b> Unification of Germany, Balkan Question, nationalism, the causes and consequences, of World Wars One and Two External written examination: 1 hour 20% of A level	<b>A2 2 Option 5: The Partition of Ireland 1905-1925</b> The 3 <sup>rd</sup> Home Rule Bill, WW1, The Easter Rising, rise of Sinn Fein, War of Independence, Anglo-Irish Treaty, Civil War, Partition, Northern Ireland State External written examination: 2 1/2 hours 40% of A level

### What skills will I develop?

By studying history you will develop many important skills. These will not only help you when you are studying other subjects but also support you in your future education and in your career. For example you will develop skills in researching and organising information, analysing and weighing up evidence and reaching a conclusion that you can substantiate. You will develop the ability to think critically and ask questions, identify patterns and trends and learn how to reach and write a coherent argument. These are important skills that are valuable in many careers as you learn to manage information effectively. You will develop your communication skills, both written and oral. You will have opportunities to work with others, present ideas and work independently – all of which are important life skills required in the workplace.

### What careers pathways are available to me if I study this subject?

Studying history can lead to a wide range of careers and opportunities for further study. The skills that you develop through history make history a well-respected and attractive subject to universities and employers.

Law

Accountancy

Research

Insurance

Politics

Journalism

Social work

Civil Service



# Hospitality BTEC (Edexcel)

## Preferred Entry Requirements:

- 5 GCSE's
- Preferable – Grade C or above in English Language and Maths.

## Why study BTEC Hospitality

If you are interested in a career in Hospitality, Agri- Food, Health and Life Sciences or Tourism then BTEC Hospitality could be for you. The Hospitality sector employs 60,000 people in NI and contributes £1.1B to the local economy. A career in Hospitality could take you all over the world!

The Hospitality course is carried out in an engaging and interactive way – but there are a lot of assignments and deadlines that must be met and so good organisation is key to being successful! The course involves learners getting the opportunity to have;

- Industry visits
- Hospitality work placements
- Opportunities to cater for school events
- Opportunities to plan, prepare and cook European dishes
- Run your own 6th Year Café.

## How will I be assessed in this subject?

Hospitality is 100% portfolio based. Students are assessed through coursework, placements, practical assessments and role play. There are no written examinations. The portfolio contains 7 units studied over the 2 years. Pupils must carry out their own independent research to consolidate learning and strengthen subject knowledge.

# Hospitality BTEC (Edexcel)

## Which units will I study?

- The Hospitality Industry
- Principles of Supervising Customer Service Performance in Hospitality, Leisure, Travel and Tourism
- Providing Customer Service in Hospitality
- Food and Drinks Service
- European Food
- Personal Selling and Promotional Skills for Hospitality
- Planning and Managing a Hospitality Event

## What skills will I develop?

By studying Hospitality, you will get the opportunity to develop a wide range of skills, including;

- Teamwork
- Communication
- Customer service
- IT
- Interpersonal skills
- Personal selling skills
- Organisational
- Problem solving
- Cookery
- And lots more!

## What career pathways are available to me if I study this subject?

The course prepares learners for further study of Hospitality and a career in various roles in the Hospitality sector, the Agri- Food Sector, Health and Life Sciences and Tourism.

# Information Technology (Cambridge Technical)

## Preferred Entry Requirements:

Minimum grade C in both Maths and English.

## Why study Applied ICT?

The Cambridge Technical in IT is a new and innovative qualification suitable for a wide range of students. More than 92% of all new jobs require IT literacy. This qualification will help equip students with these essential skills and provides an excellent platform from which to enter a range of careers.

**Northern Ireland is now home to one of the UK's fastest-growing digital sectors with one in seven jobs now in the digital sector.** The salary for someone working in IT is on average 61% higher than other industries.

The Cambridge Technical in IT allows students to gain an insight into IT and cybersecurity. A wide range of units and pathways provide students with practical and project-based opportunities to develop knowledge and skills in areas such as cybersecurity, infrastructure, IoT, application development and data analysis. Real world problems require real world solutions, solutions that acknowledge the multi-faceted nature of IT in society today.

Past pupils who have studied IT have progressed to a range of different job roles including Software Development, Quality Assurance (software testing), Social Media Management, IT Support, Project Management and many more. Students can also use this qualification in combination with other subjects to secure entry onto degree courses such as Nursing, Social Work, Business and Marketing, Digital Media Production, Pharmacy, Teaching and lots more. Digital literacy is a vital tool to empower students, regardless of the job they end up in.

Upon completion of this course, students will have the opportunity to progress to degree courses, apprenticeships, HND courses and permanent employment.



# Information Technology (Cambridge Technical)

## Which units will I study?

There are five units of study. Two externally assessed units and three coursework units.

- Unit 1: Fundamentals of IT - Exam
- Unit 2: Global information - Exam
- Unit 6: Application Design – Coursework
- Unit 13: Social Media and Digital Marketing - Coursework
- Unit 17: Internet of Everything – Coursework

## What skills will I develop?

This qualification will help students develop a range of specialist IT skills and more general transferrable skills. These skills include, investigation, analysis, communication, problem-solving, time management and working with others. Students will also develop practical skills including application development and programming.

## What careers pathways are available to me if I study this subject?

The IT industry offers many different roles and career paths which appeal to a wide range of skills from coding to graphic design to digital marketing. IT careers usually require you to work as part of a team of people who share ideas and help to develop one another's skills. A career in IT will typically involve working on projects from a range of different industries and provide opportunities to travel, thus ensuring an innovative and exciting employment experience.

Job opportunities within this sector are increasing rapidly in Northern Ireland.

Some of these jobs include: Social Media Management/Consultancy, Cybersecurity, Software Development, Computer Games Development, Network Management, Web Development, Project Management, Digital Animation, IT Support, Computer Architect, Data Analysis, Hardware Technician, Digital Film Production, Digital Photography, Graphic Design and Teacher /Lecturer.

# Life and Health Sciences

## A-Level (CCEA)

### Preferred Entry Requirements:

Double C or above in GCSE Science (CCEA double C or above).

Level 2 BTEC Science students will be considered on recommendation from their science teacher.

### Why study Life and Health Sciences?

Firstly, studying science means that the vast majority of University courses are available to you to study.

Secondly many employers value the study of science and other STEM subjects very highly. They like the knowledge and transferable skills developed by studying science.

Lastly, science, particularly at higher levels such as A-Level and degree level, is very interesting!

### How will I be assessed in this subject?

The full Double Award Advanced GCE is based on students' marks from:

AS Level: 40%

A2 Level: 60%

The course is assessed by a combination of portfolio which pupils work on continuously during the year and by external examinations which are taken in May/June of Year 13 and May/June of Year 14.

The split is 50% of total marks available for portfolio and 50% for external examinations.



# Life and Health Sciences

## A-Level (CCEA)

### Which units will I study?

At AS level, there are 3 written exams lasting 1 hour 30 minutes for each of the following units:

1. Unit AS 2: Human Body Systems
2. Unit AS 3: Aspects of Physical Chemistry in Industrial Processes
3. Unit AS 5: Material Science

At AS the three portfolio units are called...

1. Unit AS1: Experimental Techniques
2. Unit AS4: Brain Science
3. Unit AS6: Medicine, Drugs and Clinical Trials

At A2, there are written exams lasting 1 hour 45 minutes for the following units:

- Unit A2 2: Organic Chemistry
- Unit A2 3: Medical Physics
- Unit A2 4: Sound and Light

At A2 the three portfolio units are:

4. Unit A21: Scientific Method, Investigation, Analysis and Evaluation
5. Unit A2 7: Oral Health and Dentistry
6. Unit A2 10 Enabling Technology

**Please note that the specification is under consideration for amendment this year and some unit details may change slightly**

### What skills will I develop?

You will develop scientific experimental skills, reasoning skills, evaluation and analysis skills. You will also learn how to complete scientific write-ups and how to reference correctly. You will gain experience in using a wide range of scientific equipment, much of which you will not have previously used.

### What careers pathways are available to me if I study this subject?

By completing this course you can apply to around 90% of University courses. You can choose to do a science related course such as Radiography, Bio-medical science, Nursing, Optometry etc. or you can choose subjects unrelated to science such as journalism, law, languages, engineering etc.

# Mathematics A-Level (CCEA)

## Preferred Entry Requirements:

Grade A at GCSE Mathematics.

## Why study Mathematics?

Mathematics A level students and graduates are in high demand by employers.

Mathematics is the essential transferable component across all Science, Engineering, Technology and Maths Subjects.

Employers have recently stated that they are having difficulty recruiting people with Mathematics skills.

Those with **maths A level** earn on average around 10% more than those without.

You must have A level Maths if you wish to study : Maths, Statistics, Physics, Computer Science, Engineering or Accountancy at University.

Geography, Psychology, Biology, Medicine and Sports Science degrees all use advanced maths skills

## How will I be assessed in this subject?

The course is made up of 4 modules. In Year 13 you will study 2 modules, in Year 14 you will study 2 modules:

### AS Mathematics (Year 13):

Each module is worth 20% of the overall A2 marks

### A2 Mathematics (Year 14):

Each module is worth 30% of the overall A2 marks. There is no coursework in AS/A2 mathematics, assessment is purely by examination.



# Mathematics

## A-Level (CCEA)

### Which units will I study?

There are four externally assessed units

- AS 1 Pure Mathematics
- AS 2 Applied Mathematics
- A2 1 Pure Mathematics
- A2 2 Applied Mathematics

### What skills will I develop?

- *Analytical Skills* – clear thinking, attention to detail, ability to follow complex reasoning, ability to understand and construct logical arguments.
- *Communication skills* – ability to answer questions clearly and to communicate an argument precisely and logically, both orally and in written form.
- *Investigative Skills* – knowing where and how to find information.
- *Learning Skills* – ability to understand difficult concepts and apply them to a problem.
- *Problem Solving Skills* – being able to present a solution clearly, take a flexible approach, tackle a problem with confidence and appreciate when to seek help.
- *Self management* – thorough approaches to work, time management, ability to work independently, determination.

These are all skills that employers are looking for and which help when you are applying for jobs and are filling in the personal statement on your UCAS form

### What careers pathways are available to me if I study this subject?

Natural and Life Sciences, Art & Design, Business Consultancy and Operational Research, Engineering, Actuary and Insurance, IT and Computers, Medicine and Health, Education and much more...

# Moving Image Arts

## A-Level (CCEA)

### Preferred Entry Requirements:

Grade C in English Language.

A keen interest in both watching and making film as, as this forms the basis of the subject.

### Why study Moving Image Arts?

1. You will create your own original film production portfolio on this unique film-making course.
2. You will develop industry skills including writing, directing, production design, editing and sound.
3. You will broaden critical knowledge of film styles and movements in world cinema. Moving Image Arts (MIA) offers students a unique opportunity to develop and refine their skills as film-makers. It enables students to broaden their experience of audio-visual culture to inform, inspire and contextualise their own creative ideas.

### How will I be assessed in this subject?

Content	Assessment	Weightings
<b>AS 1:</b> Realist and Formalist Techniques and the Classical Hollywood Style: Foundation Portfolio	<b>Coursework</b> The portfolio is marked by teachers and moderated by CCEA.	60% of AS 24% of A level
<b>AS 2:</b> Critical Response	<b>Online examination (1hr 30mins)</b>	40% of AS 16% of A Level
<b>A2 1:</b> Creative Production and Research: Advanced Portfolio	<b>Coursework</b> The portfolio is marked by teachers and moderated by CCEA	36% of A Level



# Moving Image Arts

## A-Level (CCEA)

### Which units will I study?

Content	Content Summary
<b>AS 1:</b> Realist and Formalist Techniques and the Classical Hollywood Style: Foundation Portfolio	Study of Classical Hollywood Style. Realism and Formalism to inform the creation of a 3-4 minute narrative film sequence in response to stimulus provided by CCEA. Portfolio must include evidence of planning, research and evaluation.
<b>AS 2:</b> Critical Response	Online examination requiring recall and extended writing in response to unseen film clips <ul style="list-style-type: none"> <li>• <b>Section A</b> – Hitchcock and the Classical Hollywood Style</li> <li>• <b>Section B</b> – Formalism: Early European Cinema and American Expressionism</li> </ul>
<b>A2 1:</b> Creative Production and Research: Advanced Portfolio	Independent study of a chosen film practitioner to inform the creation of an original and complete 4-7 minute narrative film or 2 – 3.5 minute animation.  Portfolio must include an illustrated essay and evidence of planning, research and evaluation.
<b>A2 2: Advanced Critical Response</b>	Online examination requiring recall, creative thinking, extended writing and comparative analysis in response to unseen film clips and unseen film script <b>Section A</b> – Realism: Narrative and Visual Style <b>Section B</b> – Creative Exercise <b>Section C</b> – Comparative Analysis

### What skills will I develop?

MIA is an ideal choice for students wishing to pursue a career in the creative industries, which value and promote independence, originality, creative enterprise and technical skill. The course develops creative and critical abilities in writing, directing, editing, producing and analysing films from a range of contexts and disciplines

### What careers pathways are available to me if I study this subject?

MIA provides a clear link to creative industry linked courses such as Film/Animation/Production study as well as analytical literary skills that relate strongly to Broadcasting courses.

We have strong links with the School of Art & Design and Architecture in Ulster University. They have provided tours and have always impressed us with their world class animation courses. We have links with Letterkenny Institute of Technology and Design which provides a superb range of Film, Animation and Media courses and pathways.

**Careers in the Creative Industries include:** Film Director, Photographer, Animator, Movie Editor, Producer, Film and Video Editor, Animation special effects and Stop Motion Animator



# PE

## A-Level (AQA)

### Preferred Entry Requirements:

Grade B or higher with GCSE PE only. No level 2 alternative will be considered.

### How will I be assessed in this subject?

There are two exams consisting of 35% each. Practical component as a player/performer or coach with a full analysis evaluation for coursework consisting of 30% of course. Pupils must have a high degree of competency in their chosen sport e. g. representing County level or high level of attainment in selected sport.

### Which units will I study?

Content	Assessment	Weightings
Paper 1: Factors affecting participation in Physical activity and sport	Written exam: 2 hours	35% of A-level
Paper 2: Factors affecting optimal performance in physical activity and sport	Written exam: 2 hours	35% of A-level
Non-exam assessment: Practical performance in physical activity and sport	Internal assessment, external moderation	30% of A-level

### What careers pathways are available to me if I study this subject?

- PE teacher
- Physiotherapist
- Occupational therapist
- Sport psychologist
- Sports analyst
- Sports commentator
- Sports nutritionist
- Health and wellbeing careers
- History of sport researcher
- Technical skills coach



# Performing Arts (Music) A-Level

## Preferred Entry Requirements:

We welcome any student who has strong practical skills in music and is interested in developing their music performance. Having GCSE music may be an advantage, but the main requirement is a love of music and a desire to develop performance skills.

## Why study Performing Arts - Music?

Performing arts is a growth industry in Northern Ireland. This course gives students opportunities to research and gain insights into the industry, engage with effective practice and prepare for employment, further training and/or study in a creative field.

## How will I be assessed in this subject?

In CCEA GCE Performing Arts (Music) you will Study 2 Units at AS and 2 further Units at A2. The table below summarises the content and structure of the AS and A2 courses.

Content	Assessment	Weightings	Availability
AS 1: Developing Skills and Repertoire	Internally assessed Externally moderated  A portfolio, including a summary of research, skills audit, record of work, risk assessment, either live performance or production and presentation, and evaluation	60% of AS  24% of A Level	Every Summer from 2017
AS 2: Planning and Realising a Performing Arts Event	Externally set pre-release stimulus material Externally assessed  Supporting document in three sections produced under controlled conditions  Live performance and/or presentation	40% of AS  16% of A Level	Every Summer from 2017

# Performing Arts (Music) A-Level

Content	Assessment	Weightings	Availability
A2 1: Planning for Employment	Internally assessed Externally moderated  A record of work, including a written report in three sections, promotional portfolio and evaluation	60% of A2  36% of A Level	Every Summer from 2018
A2 2: Performing to a Commission Brief	Externally set pre-release stimulus material Externally assessed  A record of work, including a research report, summary of findings, evidence of tasks completed and evaluation  The evaluation is to be produced under controlled conditions.  Live performance and/or presentation	40% of A2  24% of A Level	Every Summer from 2018

## What skills will I develop?

The main components of the course involve developing your own instrumental skills, planning musical events, and performing in a variety of situations as a soloist and in ensemble.

## What careers pathways are available to me if I study this subject?

The CCEA GCE Performing Arts-Music qualification is a widely recognised qualification which provides a broad variety of career options. The course provides work-related learning opportunities with internal and external event prospects. This course is therefore very good for students who wish to specialise in Music and the wider arts at third level education, to include University. It is a useful springboard for students who wish to go into Music Industry Management, Music Business and Arts Management, Production and Recording, Teaching, or working as a Session Musician... the list is long and varied!



# Physics

## A-Level

### Preferred Entry Requirements:

The entry requirement is at least an AB in GCSE Double Award Science, including A grades in both Physics modules.

Desirable - Grade A at GCSE Maths

### Why Study A-Level Physics?

The course will allow pupils to study Physics in greater depth and to a higher level, enabling them to access university courses such as Medicine, dentistry, veterinary etc as long as they study a second science (Chemistry) in collaboration. It is also very useful for those planning to study engineering of any kind at university as well as those who wish to study Maths, Physics. Finally, A-Level Physics is also a traditional A-Level which allows pupils to apply to almost any course at University.

### How will I be assessed in this subject?

The course includes studying electricity, space science, mechanics, atomic physics as well as nuclear physics and the study of waves. Pupils will complete 2 units of study in Lower Sixth and a further two units in Upper sixth all of which are examined by external examination.

A further two modules of Practical Skills will be taken over the course of the two years.

# Professional Business Services

## A-Level (CCEA)

### Preferred Entry Requirements:

GCSE Business Studies Grade B or above. Grade C or above in English Language and Mathematics.

### Why study Business Studies – Professional Business Services?

Professional business services are critical to the success of the UK economy. They are a growth area in a global market. People who work in professional business services support businesses in all sectors by providing specialist advice. This support can include a range of services in areas such as accountancy, management, recruitment, human resources, auditing, consultation, diversity and inclusion, data analysis, risk management, and technology and communications. Through this course of study pupils will:

- develop their interest in and enthusiasm for professional business services including developing an interest in further study and careers in the subject;
- develop and draw together different areas of knowledge, skills and understanding of different aspects of the subject;
- develop competence and confidence in a number of skills, including independent learning, creative thinking, practical, mathematical and problem solving;
- carry out practical tasks and present their findings in different formats;
- appreciate the needs of business professionals operating in the marketplace of Northern Ireland and beyond; and progress to relevant higher education programmes.

### How will I be assessed in this subject?

Content	Assessment	Weightings
Unit AS 1: Introduction to Professional Business Services	External Written Examination 1 hour 30 mins (80 marks)	30% of AS 12% of A Level
Unit AS 2: Human Resource Services	Internal Assessment Portfolio based on a pre-release case study (100 marks)	40% of AS 16% of A Level
Unit AS 3: Financial Decision Making & Accountancy	External Written Examination 1 hour 30 mins (80 marks)	30% of AS 12% of A Level
Unit A2 1: Technology in Business	External Written Examination 2 hours (90 marks)	18% of A Level
Unit A2 2: Leadership and Management	External Written Examination 2 hours (90 marks)	18% of A Level
Unit A2 3: Project Management Skills and Processes	Internal Assessment Portfolio of evidence for a project management task (120 marks)	24% of A Level



# Professional Business Services

## A-Level (CCEA)

### Which units will I study?

Content
Unit AS 1: Introduction to Professional Business Services
Unit AS 2: Human Resource Services
Unit AS 3: Financial Decision Making & Accountancy
Unit A2 1: Technology in Business
Unit A2 2: Leadership and Management
Unit A2 3: Project Management Skills and Processes

### What skills will I develop

Professional business services require people with good communication and creative thinking skills, good understanding of clients' markets and a sound knowledge of market research, consultancy practices and client relationships. They require a wide range of qualities, including people skills, technical ability, a high standard of business ethics and the ability to persuade, influence and negotiate.

### What careers pathways are available to me if I study this subject?

The career pathways in this subject are endless. For example, you could enter a career in the following:

Careers in Business (snapshot)		
Self-Employment	Recruitment	Events Management
Accountancy	Banking	Retail
Marketing	Travel & Tourism	Psychology
Fashion	Hospitality	Public Relations
Management	Purchasing	Finance
Consultancy Services	LAW	Entrepreneurship
Human Resources	Civil Service	Branding
Health Promotion	Education	Sales & Marketing

# Religious Studies

## A-Level (CCEA)

### Preferred Entry Requirements:

Study of GCSE RE is desirable but not essential.

Grade B in GCSE RE, English Literature or History.

### Why study Religious Studies?

- A study of religious studies at this level will enable students to:
- Develop an insight into areas of knowledge, belief and thought central to an understanding of the modern world;
- Critically evaluate contemporary religious ideas and investigate and Speculate about the ultimate meaning and purpose of life; and
- become equipped with many of the skills needed in further and higher education and the workplace.
- Students will develop critical evaluation skills and the ability to construct logical and convincing arguments.

(Taken from CCEA Revised Specification 2017)

### How will I be assessed in this subject?

**AS units** - two externally assessed written papers, 1 hour 20 minutes each, each worth 50% of AS and 20% of A level (a total of 40% of A level)

**A2 units** — two externally assessed written papers, 2 hours each, each worth 50% of A2 level, 30% of A level (a total of 60% of A level)

At AS level, students examine 'other aspects of human experience' relating to their subject content. This will be examined in Section B of the exam paper. At A2 students will explore in greater depth these same broad areas or units from different areas of study with an emphasis on critical evaluation and synoptic assessment.

At each level, students take two written examinations, one for each of the units studied.



# Religious Studies

## A-Level (CCEA)

### Which units will I study?

#### AS Units of Study 40%

AS 1: An Introduction to the Gospel of Luke

AS7 Foundations of Ethics with special reference to Medical Ethics

#### A2 Units of Study 60%

A21 Themes in the Synoptic Gospels

A27 Global Ethics

### What skills will I develop?

Religious Studies facilitates the development of many transferable skills that can be used in a wide range of situations. These skills are

- researching
- analysing information
- communication skills (spoken and written)
- writing essays, reports and other documents
- being objective, recognising bias and balancing different viewpoints.

### What careers pathways are available to me if I study this subject?

- |                    |                        |
|--------------------|------------------------|
| • Solicitor        | • Researcher           |
| • Barrister        | • Lecturer             |
| • Medicine         | • Social work          |
| • Medical research | • Community work       |
| • Nursing          | • Archives and museums |
| • Teaching         | • Charity work         |
| • Journalism       | • Policing             |

# Science BTEC (EDEXCEL)

## Preferred Entry Requirements:

Must have achieved a pass (CC) at Level 2 BTEC Science and all pupils will now also need a recommendation from their Science teacher (s)

## Why study BTEC Science?

Pupils will get the opportunity to develop their practical skills in Biology, Chemistry and Physics and will learn about how science is applied in real world situations. Universities in England place great value on this course and universities here in N. Ireland are increasingly placing equal value on it as well.

## How will I be assessed in this subject?

There are four units to be assessed, three of which are mandatory and one optional. Two of the four units are assessed through external examination and the other two are assessed by continual assessment, that is by portfolio. The two examined units make up 58% of the total marks and the portfolio units make up the remaining 42%.



# Science

## BTEC (EDEXCEL)

### Which units will I study?

In Year 13 pupils complete two units called 'Unit 1: Principles and Applications of Science' and 'Unit 2: Practical Scientific Procedures and Techniques'.

In year 14 pupils complete a further two units called 'Unit 3: Science Investigation Skills' and a second optional unit which has yet to be decided.

**Units 1 and 2 are of equal worth (90 credit points) but Unit 3 is worth 120 credit points. The optional unit in Upper Sixth is worth 90 credit points**

### What skills will I develop?

Firstly, this course develops your practical and research skills. You will get the opportunity to practice your research skills and how to reference properly. Also, there is quite a lot of practical work. In addition, you will have to sit two exams over the course of the two years – the first in lower sixth tests knowledge of all three disciplines – Biology, Chemistry and Physics and is content driven. The second tested unit is based on practical skills – interpreting and evaluating data and graphs etc.

### What careers pathways are available to me if I study this subject?

Pupils who have studied Level 3 BTEC science have found that they can progress straight to University to study courses such as Nursing, Social Work, Classroom assistant, lab technician etc.

# Technology & Design A-Level Applied (CCEA)

## Preferred Entry Requirements:

Study of GCSE Technology & Design is desirable but not essential.

Grade B in GCSE Technology & Design, Maths or DA Science.

## Why study Technology and Design?

Those with Technology and Engineering skills in Ireland have never been more in demand and past pupils who have studied Technology & Design here at St. Mary's College are accessing degree courses, apprenticeship and permanent employment in an increasing number of related careers. This highly respected qualification opens the door to a wide range of well-paid careers in the creative, engineering, designing and manufacturing industries as well as being excellent preparation for numerous other professions. Technology & Design is purposeful in an ever changing and technological world, as well as being fun and exciting! People with Engineering and Technology degrees earn approximately 20% more per year than the average graduate salary. In today's society there are excellent job prospects for students who study Technology & Design for AS and A Level. We welcome students who have studied Technology & Design and/or Engineering or related subjects at GCSE but also those who wish to pursue the many exciting career opportunities and pathways on offer.

During this course, students explore technology and design in a range of different contexts and scenarios, from the home and community to the world of business and industry. The course appeals to those who have an enquiring mind, a desire to solve problems and a sense of how the modern world deals with changing trends and demands.

## How will I be assessed in this subject?

Unit	Assessment Description	Weighting
<b>AS 1:</b> Design and Materials and Systems and Control or Product Design	External written examinations Paper 1: Core area of study Paper 2: Specialist area of study Each paper is one hour long. There will be a 20 minute break between papers.	50% of AS 20% of A level
<b>AS 2:</b> Product Development	Internal assessment You will produce a design folder and a practical outcome. Externally moderated	50% of AS 20% of A level
<b>A2 1:</b> Systems and Control or Product Development	External written examination You will answer two questions on your specialist area of study. The paper is two hours long.	30% of A level
<b>A2 2:</b> Product-System Design and Manufacture	Internal assessment You will produce a design folder and a practical outcome. Externally moderated	30% of A level



# Technology & Design

## A-Level Applied (CCEA)

### Which units will I study?

Coursework will contribute to 50% of the grade achieved. Similar in format to what pupils of Technology have experienced at GCSE. In Year 13 students select a product of interest to them and develop it to show improvements. This product is then modelled using advanced manufacturing techniques including 3D printing. The scope in Year 14 for students to design and manufacture a product of personal interest. In Year 13 students sit one Common Core exam paper of one hour and also Product Design paper of one hour. Whereas in Year 14 students will complete a single two hour paper on Product Design.

### What skills will I develop

The skills you learn particularly those concerned with rapidly developing technologies in today's changing society are extremely valuable. The course also develops skills such as team work, time management, problem solving and many others which are highly prized by employers.

### What careers pathways are available to me if I study this subject?

- Advertising
- Architecture
- Architectural Technology Technician
- Computer Games Development
- Design and Communication
- Electronics & Computer Systems
- Biomedical Engineering
- Civil Engineer
- Computer Engineering
- Environmental Engineering
- Electrical Engineering
- Mechanical Engineering
- Nanotechnology, Advanced Materials and Bioengineering
- Fashion Design
- Graphic Design
- Product Design
- Quantity Surveyor
- And many, many more ...

There are also a wide range of higher level apprenticeships available that link to the study of Technology and Design where students 'earn while they learn'.

Staff and past pupils who have continued to courses and employment can be contacted if you wish to get more specific details about Technology & Design related pathways.

# New Horizons Programme

The New Horizons Programme at St. Mary's College is an educational programme offered in mainstream schooling. The programme's main aim is delivering support to statemented pupils with specific educational needs and other pupils with specific needs.

The course will be flexible and varied. It will include an offsite learning programme and "hands on" practice in a work environment and a focus on building up key skills, knowledge and experience using:

- The Pope John Paul II Award
- GCSE English and Maths or appropriate (Literacy & Numeracy)
- Developed School/Employer Connections
- Photography/OCN Moving Image
- Digital Art/Personal Development Focus
- Level 2 programme in Personal Development/Childcare/Health & Social Care 2018.
- OCN Level 2 Personal and Social Development
- OCN Level 1 Digital Fabrication
- OCN Level 1 Good Relations
- OCN Level 2 CACHE Child Development
- Drugs and Alcohol Awareness
- Personal Safety
- ICT

The course, aimed at Level 2, will also include developing "real life" skills that will be beneficial to the pupils in their future career choices as well as a stepping stone into work and training placements. Work experience will range across different employment sectors and will include services, such as health and beauty, to retail.

We work in partnership with the Churches Trust and Peace bytes programme on personal development courses, this is supported by the Nerve Centre



# New Horizons Programme

## Timetable & Facilitators

The sessions for the New Horizons Programme will be set out in the sample outline overleaf.

The course will be spearheaded by teaching staff and the SENCO. The current teaching staff involved in implementing the programme are:

- Mathematics (Numeracy)
- English (Literacy)
- Mrs L Hasson/ Mrs McAlister (The Prince's Trust)
- Mrs R. Rice (The Pope John Paul II Award)
- Mrs L. Kelly (Support Mentor for 'The Prince' Trust/Pope John Award)
- Home Economics (Hospitality and cooking)
- Health and Social Care

Other facilitators will be involved with school/employer connections and these will vary to meet the needs of off-site training. The timetable will be flexible for each pupil in accordance with on and off site learning.

EP New Horizons Programme	
Element of Programme	Periods Required Weekly
Enrichment	1
Core PE / Core RE / Careers	
Childcare/Health & Social Care	5
External Placement	8
Hospitality/ cooking	2
Driving theory practice	2
Essential Skills/GCSE English	4
Essential Skills/GCSE Maths	4
Pope John Paul II Award	Flexible
Transport Safety	Flexible
Social Skills	4 Churches Programme
Digital Art	



# New Horizons Programme

## Achievements

Pupils involved in the New Horizons programme will have gained valuable practical experience in a work related environment across different industry sectors. This section of the programme will include at least 3 “taster” work experience placements over the duration of the course. These placements will be both on and off site and will give the pupils the opportunity to gain key skills and improve their employment opportunities in the future.

The key skills hoped to be achieved by pupils on New Horizons include:

- **Customer Service & Communication:** The pupils will learn to be friendly and polite, taking care of the customer at all times.
- **Working as Part of a Team:** Everyone in the working environment, including the pupil on placement, works together to ensure the smooth running of the business to guarantee its success.
- **Time Management:** Pupils will be able to work efficiently, prioritising work when necessary.
- **Initiative:** Pupils will have the opportunity to, at times, make some decisions or work somewhat independently to demonstrate that they can work on their own initiative.
- **Use of Equipment/IT:** On placement, pupils will have practical, “hands-on” experience in different industries using various forms of equipment and IT e.g. retail, sports, beauty.
- **Responsibility:** This includes self-responsibility and having responsibility for their daily routine as well as more practical responsibility such as work place safety.
- **Cultural Diversity Awareness:** Pupils may have the opportunity to work with individuals from different ethnic groups. This will allow them to recognise and understand other people’s customs, culture and religion.

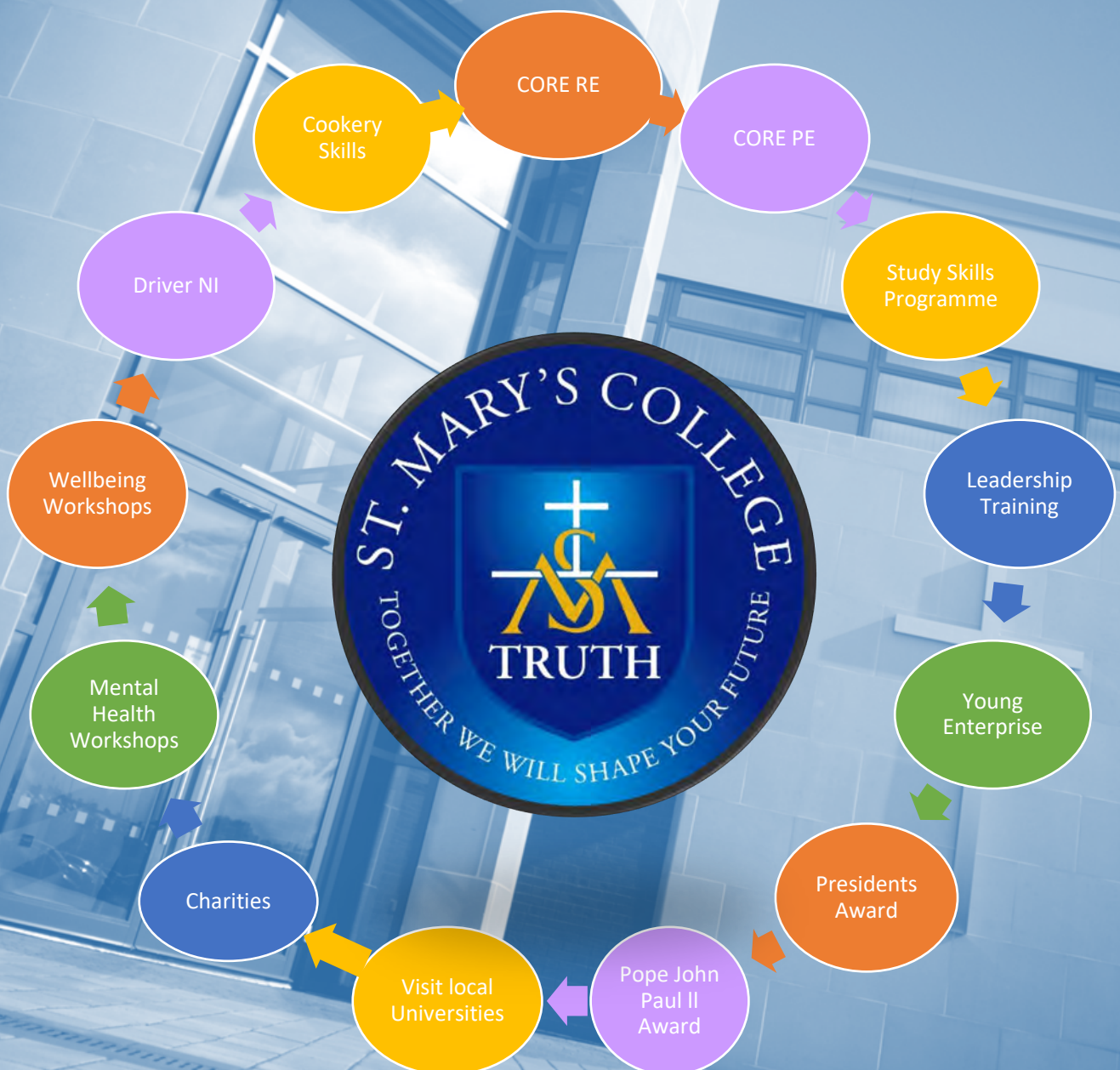
As well as the skills and experience gained in work placement the pupils will also achieve:

- OCN Health and Social Care Award Level 2
- OCN Child Care CACHE Level 2
- GCSE Maths
- GCSE English
- Pope John Paul II Silver/Gold Award
- Level 1 and Level 2 Certificates in Personal Development/Art etc



# Enrichment Programme

In Sixth Form, we feel it is important that pupils **develop life, social, health and study** skills. Sixth Form Enrichment is a specialised Programme that aims to develop your daughters' experience in the following areas:





# Outside the Classroom





# Careers

## Where do our pupils go? Destinations of Leavers in 2021

NWRC	15
Liverpool John Moores University	13
Queen's University Belfast	7
Ulster University - Coleraine	6
Ulster University - Belfast	6
Ulster University - Magee	5
Gap Year	6
Stranmillis University College	3
Full time Employment	3
Liverpool Hope University	3
University of Manchester	2
University of Brighton	1
University of East Anglia UEA	1
University of Dundee	1
Aberystwyth University	1
University of Salford	1
Ulster University -Magee	1
University of the West of Scotland	1
Ulster University - Jordanstown	1
Northumbria University, Newcastle	1
Manchester Metropolitan University	1

## Colleges & Universities

## Courses Pursued

Adult Nursing	Criminology with Counselling	Mental Health Nursing
Applied Science (Biology)	Early Childhood and Education	Midwifery
Archaeology	Fashion: Design and Communication	Music with Drama
Architecture	Finance	Photography
Art & Design	Forensic Science	Primary Education
Artificial Intelligence	Games Design	Product Design Engineering
Astrophysics	Health & Wellbeing	Psychology
Beauty Therapy	Healthcare Practice	Social Work
Biomedical Science	History	Sociology
Biotechnology with Entrepreneurship	History & International Relations	Sport & Exercise Science
Business with Finance	History with Education	Technology & Design with Education
Business with Marketing	Interactive Computing	Veterinary Nursing
CACHE - Childcare	Interior Architecture	
Children's Nursing	International Relations and Spanish	
Community Youth Work	Law	
Computer Science	Marketing	

# Careers

## Pupil Centred Careers Provision

“When today’s schoolchildren enter the workplace, many will be faced with roles that do not exist today. We want to equip these children with skills that are more resilient in the changing job market”. Future Skills Project, NESTA

### Award Winning Careers Provision

We strive to ensure that every sixth form pupil learns vital employability skills through their careers lessons at St Mary’s College. This ensures all our pupils develop their individual interests and aspirations that leads to fulfilling careers of the future. The Irish News awarded the ‘Careers Inspiration Award’ to St Mary’s College. The award acknowledges the strong links the school has developed with local businesses and leaders. This achievement is proudly shared by all staff of the school who developed their expertise in order to encourage and promote careers in their subjects.





# Careers

## Year 13 Careers

As a Year 13 pupil, you will experience a varied and informative careers programme in St Mary's College. The course will focus on your individual interests and aspirations, you will set goals, carry out careers exploration and investigate higher education options. You will learn what apprenticeships are, how the world of work is changing and the different skills needed for your future career. You will gain relevant work experience in an area of your choice and attend open days and careers conventions.



## Year 14 Careers

In Year 14, you will be provided with help and guidance to complete applications for universities through UCAS & CAO, other colleges and apprenticeships. You will be guided on how to write your personal statement. You can take part in workshops to help you prepare for upcoming open days and take part in mock interviews with your careers teacher to help you shine.



# Careers

## **‘Looking ahead to make the best choice for you’**

### **Where can I get help?**

Support is available for parents and pupils to help them make the best choices.

- Year 12 Careers Teachers & Head of Careers – Mrs Rogan
- Department for Economy Careers Advisors – Elizabeth Melaugh
- Speak to a careers adviser through live chat at [www.nidirect.gov.uk/campaigns/careers](http://www.nidirect.gov.uk/campaigns/careers)

### **What skills will be needed in the future?**

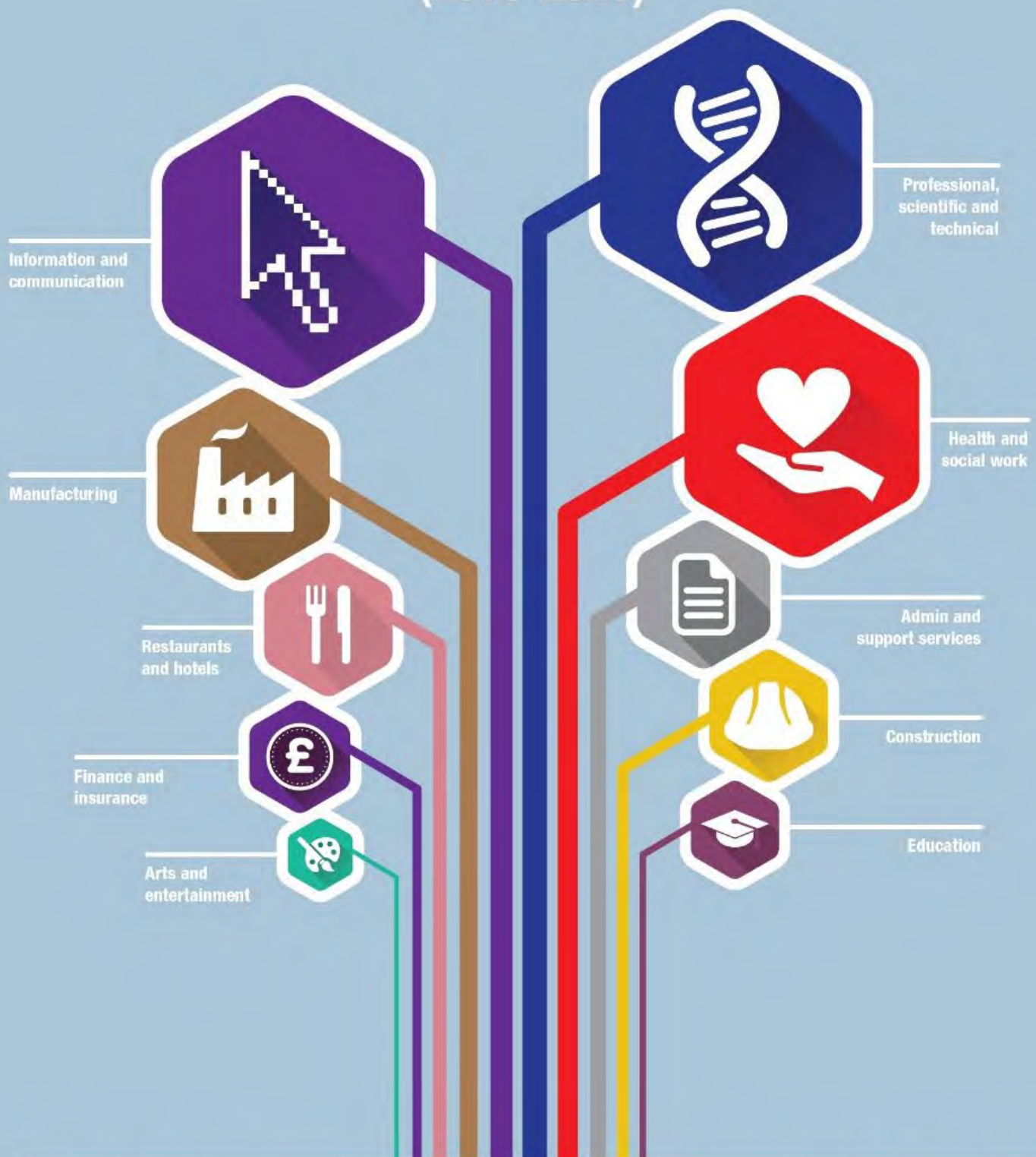
It is important to consider what skills will be important in the future. This means that young people can ensure they have the right qualifications to be successful. Areas of growth for Northern Ireland in the next 10 years include:

- ICT;
- Creative and digital media;
- Agri food sector;
- Business and financial services;
- Advanced manufacturing and engineering;
- Renewable energies and recycling; and
- Health and life sciences.



# EMPLOYMENT PROJECTIONS

## Top 10 growth sectors (2018-2028)



**There will be growth opportunities for all skills levels across a range of sectors - the focus will be predominantly on higher level skills.**

# Careers

## Looking to Universities, Colleges and Courses

- It is important to know which subjects are needed at GCSE and A-Level if you are thinking of a particular career path.
- Most courses at University and Colleges require certain subjects to be studied and they can be different from college to college and course to course.
- Each year the requirements are updated and subject to change.
- The following table summarises the subjects that are useful to study if you are thinking of a particular course career.
- This information is based on entry to courses in September 2021.
- You can check the most up to date information using the following websites: [ulster.ac.uk](http://ulster.ac.uk), [qub.ac.uk](http://qub.ac.uk), [smucb.ac.uk](http://smucb.ac.uk), [nwrc.ac.uk](http://nwrc.ac.uk), [stran.ac.uk](http://stran.ac.uk), [swc.ac.uk](http://swc.ac.uk), [pwc.ac.uk](http://pwc.ac.uk), [careersportal.ie](http://careersportal.ie)

## Consider the costs

- Colleges and Universities charge student tuition fees each year of their course.
- Every student receives a tuition fee loan to cover this cost.
- There is also means tested financial support to help with living costs.
- Tuition fees for Northern Ireland courses are £ 4,530 in 2021-22. Courses in England, Scotland and Wales tuition fees are £9250.
- Further education colleges such as the North West Regional College charge around £2500 per year for higher education courses.
- Tuition fees for courses in the Republic of Ireland Colleges cost around €3000 per year.

## Other ways to gain qualifications:

Higher Level Apprenticeships are work-based programmes which enables young people to earn while they learn and gain a recognised professional qualification. Foundation degrees and HNCs are higher education programmes offered in further education colleges, they offer excellent progression paths into careers and university. They are offered at NWRC, Ulster and Belfast Met.

## Career Pathways

Career Area	Useful GCSE Subjects	Useful A-Level Subjects	University Pathway	Apprenticeship Pathway / Foundation Degree
<b>Accountancy</b>	Maths* English* Business Digital Technology	Maths* Business BTEC IT Software Systems Development	<b>Ulster University</b> <u>BSc Hons Accounting</u> A-Level ABB (BBB if Maths A-Level) / BTEC D*DD GCSE Maths B, English C	<b>North West Regional College</b> <u>Higher Level Apprenticeship in Accountancy</u> 96 UCAS points (CCC) GCSE Grade C in English and B in Maths
<b>Art &amp; Design</b>	Art* BTEC IT English Technology	Art* Technology & Design Moving Image Arts	<b>Ulster University</b> <u>BA Hons Fine Art</u> A-Level BBB BTEC DDD GCSE English C	<b>North West Regional College</b> <u>BTEC HND in Art (Textiles or Art Practice)</u> 40 UCAS points & 4 GCSEs (Grade C or above) to include Art, Maths and English
<b>Business</b>	Maths* English* Business	Business studies BTEC IT Maths Health & Social Care	<b>Ulster University</b> <u>BSc Hons Business Studies</u> A-Level BBC BTEC DDD GCSE Maths C, English C	<b>North West Regional College</b> <u>Foundation Degree in Business &amp; Finance</u> 72 UCAS Tariff points GCSE C in English & Maths
<b>Computer Science</b>	Maths* English*	Software Systems Development*	<b>Ulster University</b>	<b>South West College (Omagh)</b>



<b>Career Area</b>	<b>Useful GCSE Subjects</b>	<b>Useful A-Level Subjects</b>	<b>University Pathway</b>	<b>Apprenticeship Pathway / Foundation Degree</b>
	Digital Technology	Maths* IT Technology & Design	BSc Hons Computer Science A-Level ABB BTEC D*DD GCSE Maths C, English C	<u>Foundation Degree in Cyber Security</u> 48 UCAS points, plus 5 GCSE Grade Cs including English and Maths;
<b>Drama</b>	English* Drama Moving Image Arts	English Literature* Drama Moving Image Arts	<b>Queen's University</b> BA Hons Drama A-Level BBB	<b>North West Regional College</b> <u>BTEC HNC/ HND in Performing Arts</u> UCAS points: 32
<b>Early Years</b>	Maths* English* Child Development Science	Health & Social Care* Children's Learning Life & Health Science English Literature	<b>Stranmillis University College</b> <u>BA Early Childhood Studies</u> A-Level BBB BTEC DDD Health & Social Care GCSE Grade C in Maths and English	<b>North West Regional College</b> <u>HND Early Childhood Education and Care</u> 42 UCAS points and GCSE English C
<b>English Literature</b>	English* English Literature	English Literature* History RE Modern Language	<b>Ulster University</b> BA Hons English with Education A-Level CCC BTEC DMM	<b>North West Regional College</b> <u>BTEC HNC in Creative Media Production (Journalism)</u> 32 UCAS Points plus GCSE (Grade C or above) in English;
<b>Engineering</b>	Maths* English* Technology Digital Technology Geography	Maths* Physics Technology & Design* Digital Technology	<b>Ulster University</b> BEng (Hons) Engineering Management BBB to include Technology or Maths BTEC DDD	<b>North West Regional College</b> <u>Higher Level Apprenticeship in Electrical &amp; Electronic Engineering</u> 56 UCAS points; Level 3 Grade C in one of Maths, Chemistry, Physics, Biology, Engineering, Science. Grade C in GCSE Maths & English
<b>Geography</b>	Maths* English* Geography	Geography* Biology Chemistry Maths BTEC IT	<b>Ulster University</b> BSc Hons Geography with Education A-Level BCC to include Geography BTEC DDM GCSE Maths C, English C	<b>South West College (Omagh)</b> <u>Foundation Degree in Energy, Environment and Sustainability</u> CC, or CD to include Geography plus GCSE Grade C in Science, English & Maths
<b>Hospitality</b>	English* Hospitality Modern Language Geography Business	Hospitality Geography Modern Language Business BTEC IT	<b>Ulster University</b> BSc Hons International Hospitality Management A-Level BCC BTEC DDM GCSE Maths C, English C	<b>North West Regional College</b> <u>Higher Level Apprenticeship in International Travel &amp; Tourism Management</u> 72 UCAS points plus GCSE Grade C in English & Maths
<b>History</b>	History* English* RE	History* English literature Politics RE	<b>Ulster University</b> <u>BA Hons History</u> with Education A-Level CCC	<b>North West Regional College</b> <u>NCTJ Diploma in Journalism</u> 32 UCAS Points
<b>IT</b>	Maths* BTEC IT Digital Technology Business	ICT Software Systems Development Business Maths	<b>Ulster University</b> <u>BSc Hons Information Technologies</u> A-Level BBC BTEC DDD	<b>North West Regional College</b> <u>Higher Level Apprenticeship in Software Development</u> 56 UCAS points with GCSE English & Maths Grade C

<b>Career Area</b>	<b>Useful GCSE Subjects</b>	<b>Useful A-Level Subjects</b>	<b>University Pathway</b>	<b>Apprenticeship Pathway / Foundation Degree</b>
	Technology		GCSE Maths C, English C	
<b>Law</b>	English* History Modern Language RE	History Modern Language English RE Politics	<b>Ulster University</b> LLB Hons Law A-Level BBB BTEC DDD GCSE English C	<b>Legal Apprenticeships</b> (Paralegal) available through solicitors firms
<b>Media</b>	English* BTEC IT History Drama	Moving Image Art English History Drama	<b>Queen's University</b> <u>BA Hons Broadcast Production</u> A-Level ABB	<b>North West Regional College</b> <u>BTEC HNC / HND in Creative Media Production</u> 32 UCAS Points, GCSE English C
<b>Medicine</b>	GCSE DA or TA Science* English* Maths* 9 GCSE in total	Chemistry* Biology* Either Maths or Physics (or both)* 3 A levels / 4 AS levels	<b>Queen's University</b> <u>MB Medicine</u> A-Level A*AA OR AAA + 4 <sup>th</sup> AS. A-level Chemistry and one from Biology, Physics or Maths. 9 GCSEs. University Clinical Aptitude Test (UCAT).	<b>North West Regional College</b> <u>Foundation Degree Medical and Applied Sciences</u> 48 UCAS points including A Level pass in a Science. GCSE Maths C, Science C, English C
<b>Midwifery</b>	GCSE Science* English* Maths* Health & Social Care Childcare	Life & Health Science* Biology Health & Social Care	<b>Queen's University</b> BSc Midwifery Sciences A-Level BBC BTEC DDM 5 GCSE at Grade B to include Maths and GCSE Science	<b>North West Regional College</b> <u>HNC Applied Science (Biology)</u> 48 UCAS Points including a pass in a Science. GCSE Maths C, Science C, English C
<b>Music</b>	English* Music* Drama	Music* Grade VII / VIII for main instrument* English Literature	<b>Ulster University</b> BMus Hons Music A-Level BBC (B Music or Grade 8 Practical) BTEC DMM	<b>North West Regional College</b> <u>HND in Music or Music Production</u> 32 UCAS Points
<b>Nursing</b>	Maths* English* Science* Health & Social Care Childcare	Life & Health Science* BTEC Science Biology Health & Social Care	<b>Ulster University</b> BSc Hons Adult Nursing A-Level BBC BTEC DDD GCSE Maths, English and Science C	<b>North West Regional College</b> <u>HNC Healthcare Practice</u> 64 UCAS points 5 GCSEs at Grade C or above, to include English GCSE and Maths
<b>Psychology</b>	English* History Health & Social Care Childcare	Health & Social Care Biology Maths Psychology	<b>Ulster University</b> BSc Hons Psychology A-Level BBB BTEC DDM GCSE English C	<b>North West Regional College</b> <u>Foundation Degree (FdSc) Health &amp; Social Care</u> 48 UCAS points; 5 GCSEs including Maths and English.
<b>Radiotherapy</b>	Maths* English* DA Science* Health & Social Care	Life & Health Science* Health & Social Care Maths Biology	<b>Ulster University</b> <u>BSc Hons Diagnostic Radiography &amp; Imaging</u> A-Level BBB to include Maths or Science. HPAT. GCSE Maths C, English C and DA Science BB	<b>North West Regional College</b> <u>Foundation Degree (FdSc) Health &amp; Social Care</u> 48 UCAS points; 5 GCSEs including Maths and English.
<b>Social Work</b>	Maths* English*	Health & Social Care RE	<b>Ulster University</b> BSc Hons Social Work A-Level BBB	<b>North West Regional College</b> <u>HNC Healthcare Practice</u> 64 UCAS points



<b>Career Area</b>	<b>Useful GCSE Subjects</b>	<b>Useful A-Level Subjects</b>	<b>University Pathway</b>	<b>Apprenticeship Pathway / Foundation Degree</b>
	Health & Social Care Childcare History	Politics History English Lit	BTEC DDD GCSE English & Maths C	5 GCSEs at Grade C or above, to include English GCSE and Maths
<b>Sport Science</b>	Maths* English* DA Science* PE / Sport	Life & Health Science* BTEC Sport* PE BTEC Science Biology	<b>Ulster University</b> BSc Hons Sport and Exercise Sciences A-Level ABB BTEC D*DD Grade B in PE/ Sport/Science	<b>North West Regional College</b> <u>Foundation Degree in Sport, Exercise &amp; Fitness</u> 64 UCAS points GCSE Maths C, English C
<b>Teaching</b>	Maths* English* DA Science* Health & Social Care Childcare	A-Level in the Subject you want to teach* PE/ Sport Music	<b>St Mary's University College, Belfast</b> <u>BEd Hons Primary Education</u> A-Level AAB-GCSE Science, Maths & English C <u>BEd Hons Post Primary</u> A-Level AAB – BBC GCSE Maths C; Eng C	<b>North West Regional College</b> <u>Foundation Degree in Early Childhood Studies</u> 72 UCAS points + GCSE Maths & English C (or equivalent)

UCAS Tariff Points: A-Level - A\* 56; A 48; B 40; C 32; D 24. BTEC - Distinction 56; Merit 32; Pass 16

\*Essential for some university & college pathways





# Occasions

## Sixth Form

### **Prizegiving**

All of the students from Lower Sixth and those students from Upper Sixth who have been nominated for awards are expected to attend Prizegiving in full uniform.

### **Formal**

There is usually a formal, organised by the Student Leadership Team and school staff. This event is held in Autumn of Year 14.

### **Principal's Brunch**

To recognise pupils' dedication to study and to the school community of St Mary's College, the Principal will host a brunch at the end of the school year for Year 14 students.

### **Mass of Thanksgiving**

Mass will be celebrated for Year 14 and their families to give thanks for their time here at St Mary's and as they go forward and transition to the next phase of their lives.

### **Pope John Paul II Award**

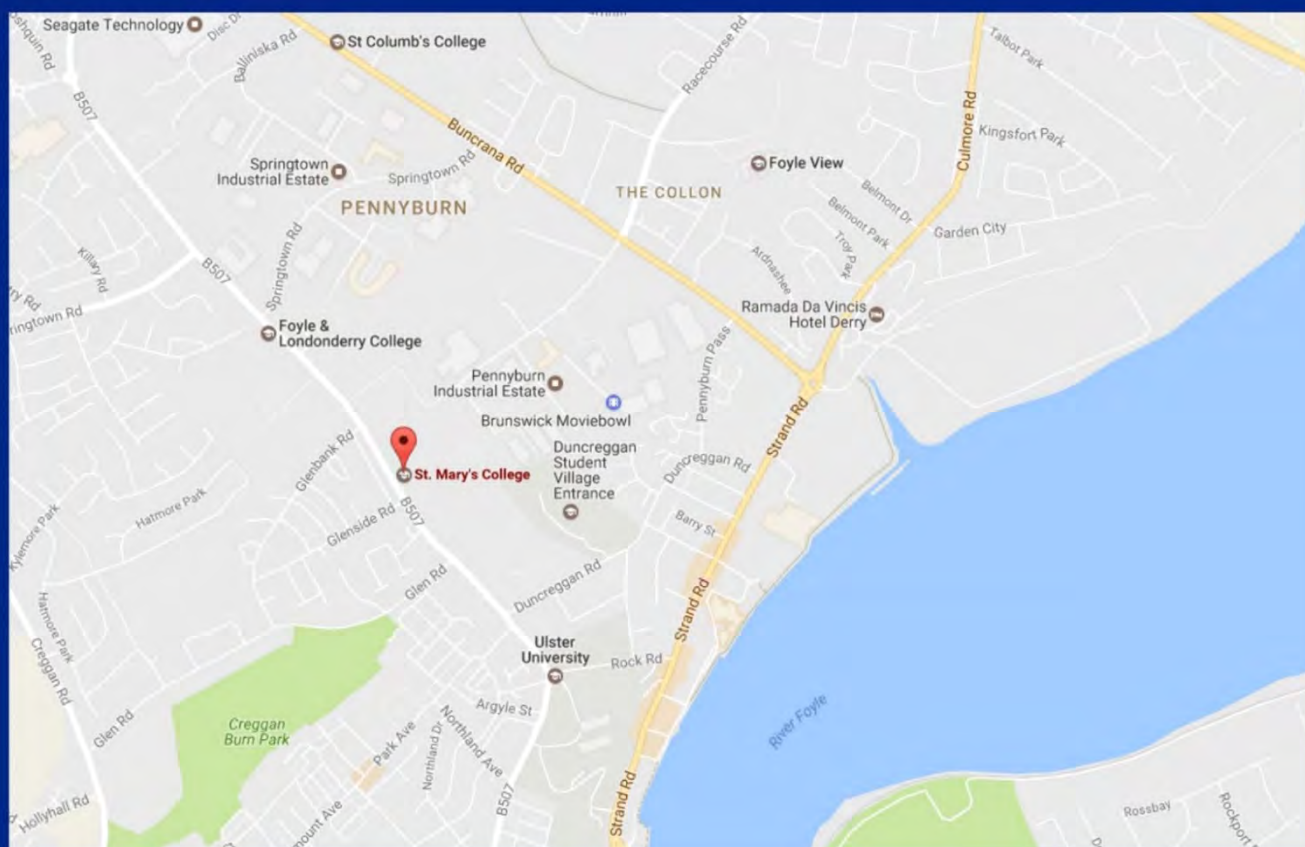
The Pope John Paul II Award allows students to actively engage in the life of their parish and the local community. Pupils receive their award at a ceremony in the Millennium Forum in February of Year 14.





# ST MARY'S COLLEGE

*Together we will shape your future*



## St Mary's College

35 Northland Road  
Derry  
BT48 0AN

**(T):** (028) 7136 2154

**(E):** [office@stmarysderry.com](mailto:office@stmarysderry.com)

**(W):** [www.stmarysderry.com](http://www.stmarysderry.com)

**We're on Social Media**  
Come check us out!

## Social Media

**Twitter:** @SaintMarysDerry

**Facebook:** /StMarysDerry

**Instagram:** StMarysDerry

**Youtube:** StMarysDerry

**'May respect for each other be the light that guides us'**